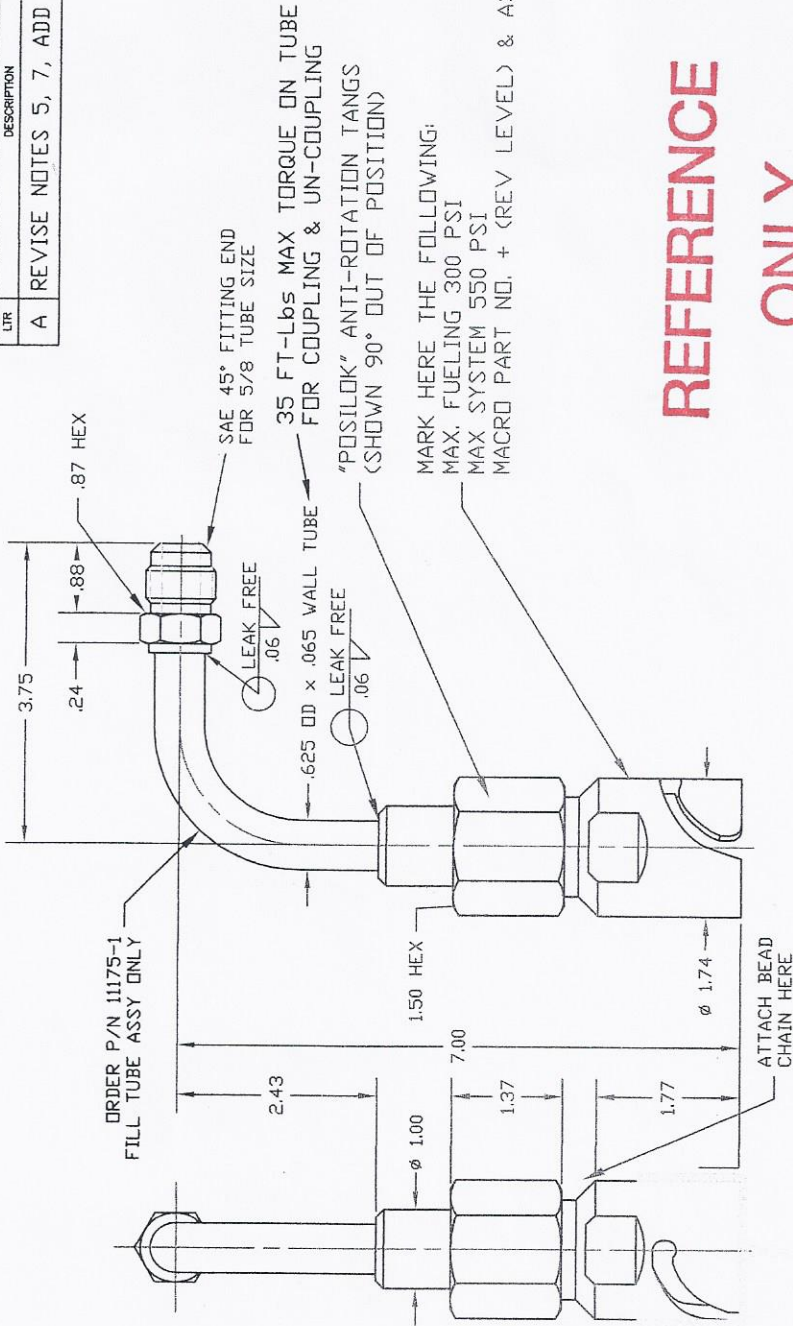


**NOTICE**  
 THIS DRAWING, ENGINES, OR PARTS ARE PRELIMINARY DESIGN ORIGINATED BY  
 MACRO TECHNOLOGIES LLC. ALL RIGHTS RESERVED. NO WARRANTY IS MADE  
 USE AND SALES RIGHTS REGARDING THE SAME ARE EXPRESSLY RESERVED.  
 IS LIMITED UNDER A CONFIDENTIAL RELATIONSHIP FOR A SPECIFIC  
 TO SUPPLY OR DISCLOSE ANY INFORMATION REGARDING IT TO ANY UNAUTHORIZED  
 PERSON, OR TO INCORPORATE IN OTHER PROJECTS ANY SPECIAL FEATURES  
 RESERVED BY MACRO TECHNOLOGIES LLC.

**REVISIONS**

LTR	DESCRIPTION	DATE	APPROVAL
A	REVISE NOTES 5, 7, ADD NOTE 8	05-01-14	JD



**REFERENCE  
 ONLY**

- ALL COMPONENTS CLEANED PER CGA G-4.1 PRIOR TO ASSEMBLY PER WORK ORDER REQUIREMENTS
- THREADED JOINTS LUBRICATED USING 'KRYTOX' GPL-206
- GENERAL OPERATING SPECIFICATIONS:  
 a. MEDIA: LNG (LIQUID NATURAL GAS)  
 b. MAX. INTERNAL PRESSURE: 300 PSIG (FUELING); 550 PSIG (STATIC SYSTEM)  
 c. TEMPERATURE RANGE: -350°F TO +150°F
- PACKAGE IN A SEALED POLY BAG IDENTIFIED PER WORK ORDER REQUIREMENTS
- ORDER P/N 11175-2 FOR SEAL REPAIR KIT. KIT CONTAINS 1093 SEAL ASSY, 1172 SEAL, 1157 POPPET ASSEMBLY AND 14393 INSTRUCTIONS. NOTE: USE T-1948 ASSEMBLY TOOL (SOLD SEPARATELY)
- ORDER P/N 11175-3 FOR REPLACEMENT HOUSING AND SEAL (ASSEMBLED AND SEALED IN A POLY BAG)
- TEST PRESSURE: 605 PSIG, DRY NITROGEN @ 70 °F. MAY BE TESTED COUPLED OR UN-COUPLED FROM ITS MATING HALF. CANNOT BE APPLIED WHILE BEING COUPLED OR UN-COUPLED.
- DESIGN CODE: ASME B31.3 2012 ED

QUANTITY REQ'D	BSC	-1	-2	FSCM NO.	PART NUMBER	PART DESCRIPTION	MATERIAL / FINISH SPECIFICATION	ITEM
<p>* UNLESS OTHERWISE SPECIFIED * ALL DIMENSIONS ARE IN INCHES AND ARE TO BE MET BEFORE FINISHING</p> <p>TOLERANCES ARE:            DECIMALS: .XX = ± .030, .XXX = ± .010, ANGULAR: ± .3°</p> <p>BREAK SHARP EDGES .005-.010 &amp; REMOVE BURRS            MACHINED FILLETS TO BE .010-.030 RADIUS            COUPLER PARTS TO BE .005-.010 RADIUS            GENERAL FINISH TO BE 100 RMS PER ASA B46.1</p> <p>NEXT ASSY PART NO. QUAN</p>								
<p>DRILLED HOLE TO:            0.13 TO 1.25 ± .004 - .001            1.25 TO 2.50 ± .005 - .001            2.50 TO 5.00 ± .006 - .001            5.00 TO 7.50 ± .008 - .001            7.50 TO 1.00 ± .010 - .001            1.00 TO 1.50 ± .012 - .001</p>								
<p>CONTRACT NO. CUSTOMER SPEC CUSTOMER DESIGN ACTIVITY CHECKED BY ENGR DRAWN BY DATE DATE DATE DATE</p>								
<p>Macro Technologies LLC            12530 - 135th Ave N.E. * Kirkland, WA * 98034</p>								
<p>LNG FILL SYSTEM            FEMALE QDV WITH FILL TUBE ASSEMBLY</p>								
<p>SCALE: NONE</p>								
<p>REV: S-11175 &amp; DASH A</p>								
<p>DATE: 03-06-14</p>								
<p>SHEET: 1 OF 1</p>								