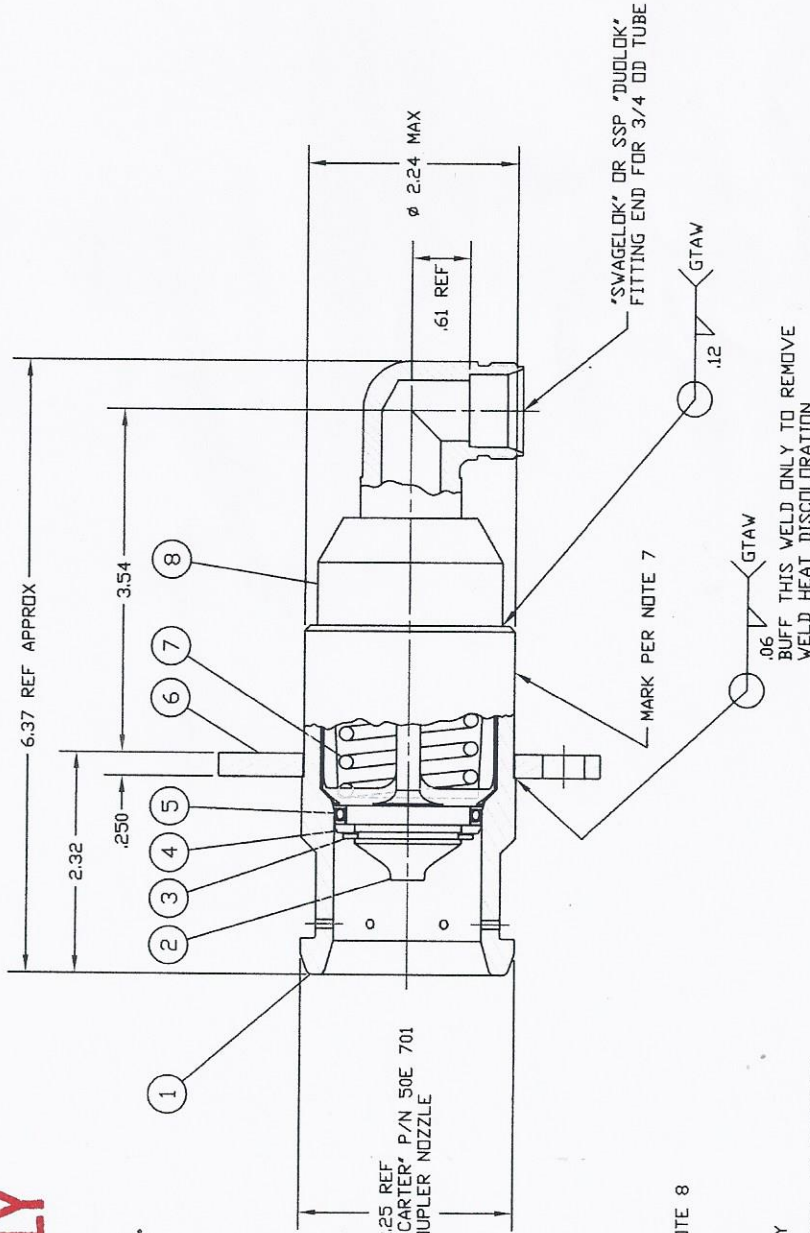
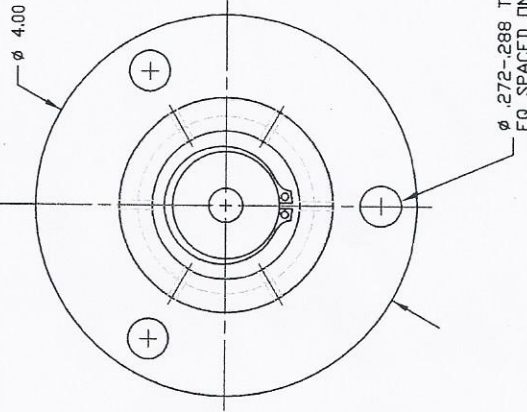


NOTICE
 THIS DRAWING UNLESS OTHERWISE SPECIFIED, IS THE PROPERTY OF MACRO TECHNOLOGIES INC. AND SHALL BE KEPT CONFIDENTIAL. THE USER SHALL NOT REPRODUCE, COPY, OR TRANSMIT THIS DRAWING IN ANY FORM OR BY ANY MEANS, ELECTRONIC OR MECHANICAL, INCLUDING PHOTOCOPYING, RECORDING, OR BY ANY INFORMATION STORAGE AND RETRIEVAL SYSTEM, WITHOUT THE WRITTEN PERMISSION OF MACRO TECHNOLOGIES INC. ALL RIGHTS RESERVED. THIS DRAWING IS THE PROPERTY OF MACRO TECHNOLOGIES INC.

REFERENCE ONLY

ITEM 8, FITTING TO BE ALIGNED TO HOLE PATTERN AS SHOWN W/IN ±3.0°



MATES WITH 'JC CARTER' P/N 50E 701 FEMALE COUPLER NOZZLE

Ø .272-.288 THRU (3) PLS, SEE NOTE 8 EQ SPACED ON Ø 3.25 BC

1. ALL COMPONENTS CLEANED PER CGA G-4.1 PRIOR TO ASSEMBLY
2. LUBRICATE THREADED JOINTS USING 'KRYTOX' GPL-206 OR EQUAL, IF REQUIRED
3. GENERAL OPERATING SPECIFICATIONS:
 - a. MEDIA: LNG (LIQUEFIED NATURAL GAS)
 - b. MAX. INTERNAL PRESSURE: 300 PSIG (FUELING) 550 PSIG (STATIC SYSTEM)
 - c. TEMPERATURE RANGE: -350°F TO +150°F
4. PACKAGE IN A SEALED POLY BAG IDENTIFIED PER W.O. REQUIREMENTS
5. ALL WELDS PROVIDING A INTERNAL PRESSURE TIGHT INTERFACE SHALL BE LEAK FREE
6. FUNCTIONAL TEST:
 - a. --DELETED--
 - b. --DELETED--
 - c. VERIFY --LEAKAGE AT THE POPPET SEAL, USE 'SNOOP' OR 'TRAX' AT 50 PSIG (LOW) AND 300 PSIG (HIGH) FOR 30 SECONDS EACH, --0-- BUBBLES
7. PERMANENTLY MARK ON SURFACE INDICATED THE FOLLOWING:
 - a. MACRO PART NUMBER & REVISION LEVEL
 - b. ASSEMBLY DATE CODE
 - c. HOUSING MATERIAL TRACEABILITY CODE 'MMC'
 - d. OPERATING PRESSURE:
 1. FUELING 300 PSIG / 20.7 BAR
 2. SYSTEM 550 PSIG / 38 BAR
8. (3) MOUNTING HOLES (Ø .280 NOM) MAY HAVE SLIGHT DISCONTINUITIES DUE TO MFG. METHODS. A Ø .262 PIN SHALL FREELY PASS THROUGH ALL HOLES
9. BUFF WELDS TO REMOVE WELD HEAT DISCOLORATION

LTR	DESCRIPTION	REVISIONS	DATE	APPROVAL
D	REMOVED .12 WELD TO FITTING END		12-22-11	JD
E	UPDATE NOTES 5, 7, AND 6; DELETE NOTES 6a & 6b		08-01-13	JD

ITEM	QTY	DESCRIPTION	PART NO.	FINISH	REVISION
1	1	FITTING, WELD	13654	CRES	8
1	1	SPRING	13607	CRES	7
1	1	FLANGE	13626	304 CRES	6
1	1	SEAL ASSY	14010	UHMW POLYMER / CRES SPRING	5
1	1	RETAINER	13527	BRASS	4
1	1	RETAINING RING	13531	CRES	3
1	1	POPPET	13599	303 CRES	2
1	1	BODY	13598	304 DR 316 CRES	1

ITEM	QTY	DESCRIPTION	PART NO.	FINISH	REVISION
1	1	RECEPTACLE, FUELING	13705	CRES	1

Macro Technologies Inc.
 1815 - 124th Ave N.E. • Kirkland, WA • 98034

QDV, MALE, RECEPTACLE, FUELING
 3/4 TUBE FITTING, 90° ELBOW

DATE: 08-01-13
 DRAWN BY: C 62529
 CHECKED BY: HK 04-28-09
 PART NO.: 13705
 REV: E