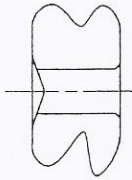
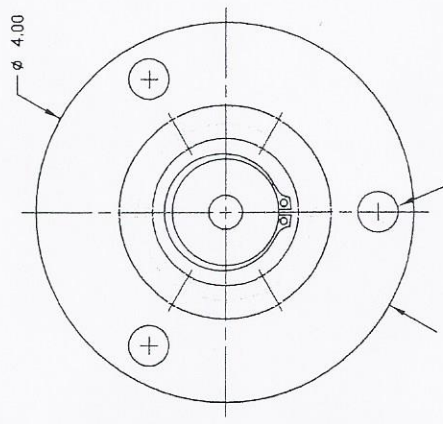


**NOTICE**  
 THE DRAWING ENGINEER'S A PROVISIONAL DESIGN ORIGINATED BY  
 THE COMPANY AND SHALL BE KEPT IN THE COMPANY'S POSSESSION,  
 CONTROL AND THE RECIPIENT AGREES TO ACCEPT THE DRAWING SET  
 FOR THE PROJECT AND TO HOLD THE COMPANY HARMLESS AND TO HOLD THE  
 COMPANY HARMLESS IN OTHER PROJECTS AND TO HOLD THE COMPANY  
 HARMLESS TO THE COMPANY'S TRADE SECRETS AND PROPRIETARY  
 INFORMATION.

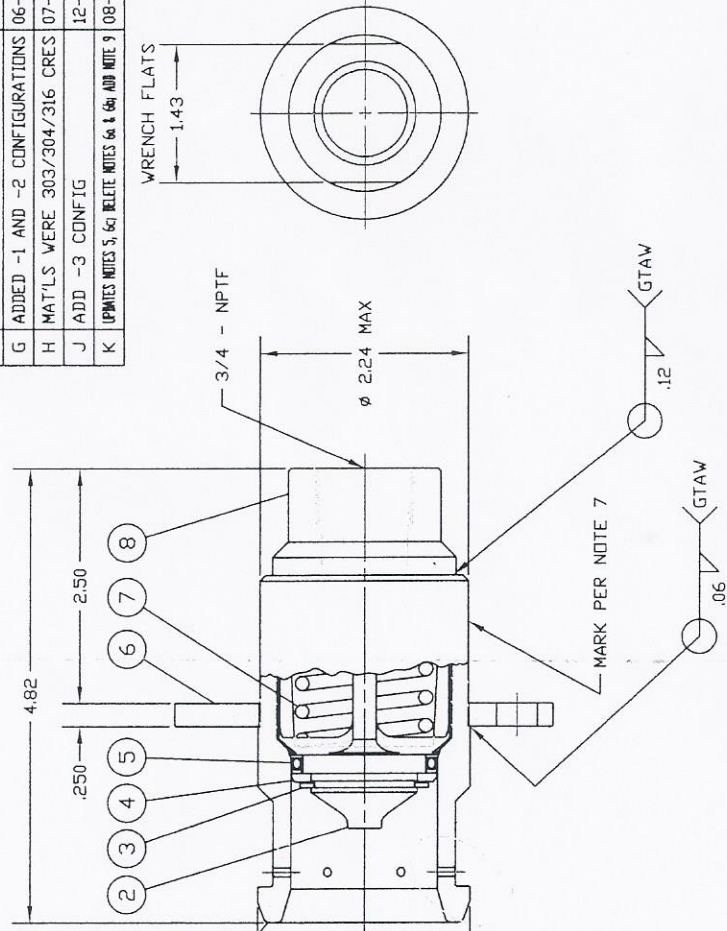


VIEW A  
 -3 CONFIGURATION ONLY



Ø 2.25 REF  
 MATES WITH CryoMac™ 50M SERIES  
 OR 'JC CARTER' P/N 50E 701  
 FEMALE COUPLER NOZZLE

Ø .272-.288 THRU (3) PLS, SEE NOTE 8  
 EQ SPACED ON Ø 3.25 BC  
 RADIAL LOCATION NOT MAINTAINED



REV	DESCRIPTION	DATE	APPROVAL
C	ADD NOTE 7	04-15-09	HK
D	REVISE GEN. NOTES, SEE DCN	02-28-11	HK
E	ITEM 5 P/N WAS 13606	05-20-11	HK
F	REMOVED PARENTHESIS IN NOTE 7.d	01-06-12	JD
G	ADDED -1 AND -2 CONFIGURATIONS	06-06-12	JD
H	MAT'L'S WERE 303/304/316 CRES	07-02-12	JD
J	ADD -3 CONFIG	12-12-12	JD
K	UPDATES NOTES 5, 6, 8 DELETE NOTES 6a & 6b ADD NOTE 9	08-01-13	JD

ITEM	QUANTITY	RECD	BSC	PSCH NO.	PART NUMBER	PART DESCRIPTION	MATERIAL / FINISH SPECIFICATION
1	0	0	0		13598-1	BODY, GROOVED VENT	CRES
0	1	0	0		13665	ALUMINUM CAP	ALUMINUM, CRES
0	0	1	0		14091	POLY CAP	STEEL, CRES, ALUMINUM, VINYL
1	1	1	1		13602	END CAP	CRES
1	1	1	1		13607	SPRING	CRES
1	1	1	1		13626	FLANGE	CRES
1	1	1	1		14010	SEAL ASSY	UHMW POLYMER / CRES SPRING
1	1	1	1		13527	RETAINER	BRASS
1	1	1	1		13531	RETAINING RING	CRES
1	1	1	1		13599	POPPET	CRES
0	1	1	1		13598	BODY	CRES
-2	-1						
-3							

NOT SHOWN  
 FOR CLARITY

- ALL COMPONENTS CLEANED PER CGA G-4.1 PRIOR TO ASSEMBLY
- LUBRICATE THREADED JOINTS USING 'KRYTOX' GPL-206 OR EQUAL, IF REQUIRED
- GENERAL OPERATING SPECIFICATIONS:
  - MEDIA: LNG (LIQUEFIED NATURAL GAS)
  - MAX. INTERNAL PRESSURE: 300 PSIG (FUELING) 550 PSIG (STATIC SYSTEM)
  - TEMPERATURE RANGE: -350°F TO +150°F
- PACKAGE IN A SEALED POLY BAG IDENTIFIED PER W.D. REQUIREMENTS
- ALL WELDS PROVIDING A INTERNAL PRESSURE TIGHT INTERFACE SHALL BE LEAK FREE
- FUNCTIONAL TEST:
  - DELETED---
  - DELETED---
  - VERIFY -0- LEAKAGE AT THE POPPET SEAL. USE 'SNOOP' OR 'TRAX' AT 50 PSIG (LOW) AND 300 PSIG (HIGH) FOR 30 SECONDS EACH, -0- BUBBLES
- PERMANENTLY MARK ON SURFACE INDICATED THE FOLLOWING:
  - MACRO PART NUMBER & REVISION LEVEL
  - ASSEMBLY DATE CODE
  - HOUSING MATERIAL TRACEABILITY CODE 'MMC'
  - OPERATING PRESSURE:
    - FUELING 300 PSIG / 20.7 BAR
    - SYSTEM 550 PSIG / 38 BAR
- (3) MOUNTING HOLES (Ø .280 NOM) MAY HAVE SLIGHT DISCONTINUITIES DUE TO MFG. METHODS. A Ø .262 PIN SHALL FREELY PASS THROUGH ALL HOLES
- BUFF WELDS TO REMOVE WELD HEAT DISCOLORATION

<b>Macro Technologies LLC</b> 12530 - 135th Ave N.E. • Kirkland, WA • 98034	
FILE <b>QDV, MALE, RECEPTACLE, FUELING</b>	DATE 08-12-08
QTY <b>1</b>	DATE 08-12-08
CODE <b>C 62529</b>	DATE 08-12-08
SCALE NONE	DATE 08-12-08
SHEET 1	DATE 08-12-08