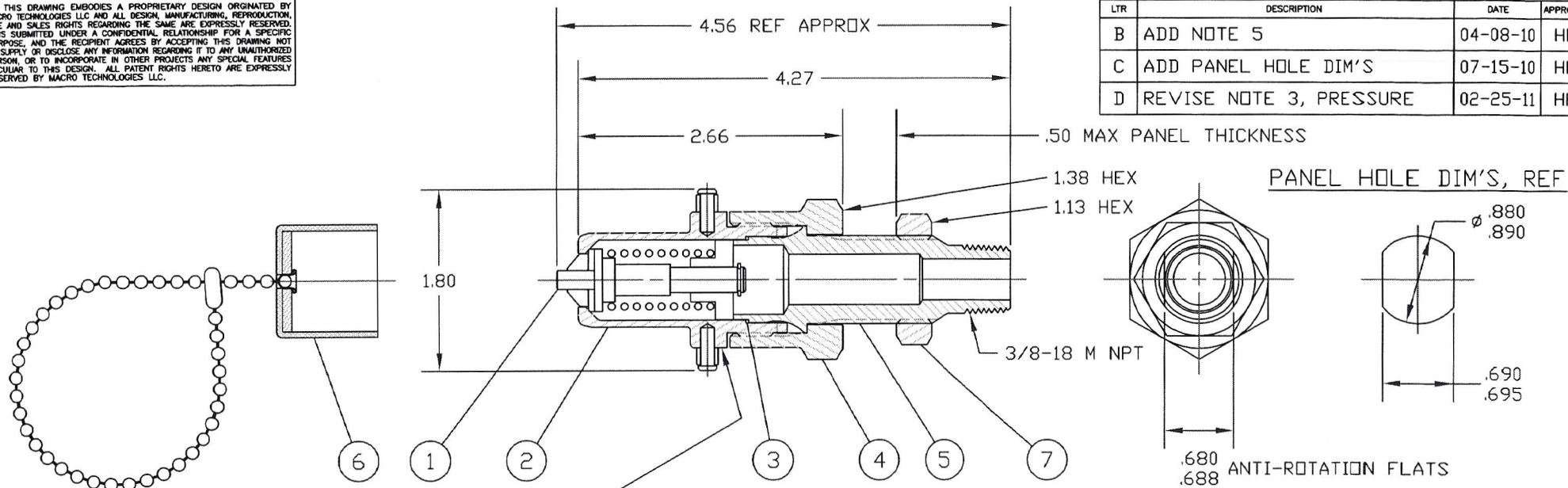


NOTICE

THIS DRAWING EMBODIES A PROPRIETARY DESIGN ORIGINATED BY MACRO TECHNOLOGIES LLC AND ALL DESIGN, MANUFACTURING, REPRODUCTION, USE AND SALES RIGHTS REGARDING THE SAME ARE EXPRESSLY RESERVED. IT IS SUBMITTED UNDER A CONFIDENTIAL RELATIONSHIP FOR A SPECIFIC PURPOSE, AND THE RECIPIENT AGREES BY ACCEPTING THIS DRAWING NOT TO SUPPLY OR DISCLOSE ANY INFORMATION REGARDING IT TO ANY UNAUTHORIZED PERSON, OR TO INCORPORATE IN OTHER PROJECTS ANY SPECIAL FEATURES PEGULANT TO THIS DESIGN. ALL PATENT RIGHTS HERETO ARE EXPRESSLY RESERVED BY MACRO TECHNOLOGIES LLC.

REVISIONS			
LTR	DESCRIPTION	DATE	APPROVAL
B	ADD NOTE 5	04-08-10	HK
C	ADD PANEL HOLE DIM'S	07-15-10	HK
D	REVISE NOTE 3, PRESSURE	02-25-11	HK



MARK HERE THE FOLLOWING:
 MAX. FUELING PRESS: 300 PSIG / 20.7 BAR
 MAX SYSTEM PRESS: 550 PSIG / 38 BAR
 MACRO 12895 + (REV LEVEL) & ASSY DATE CODE

- ALL COMPONENTS CLEANED PER CGA G-4.1 PRIOR TO ASSEMBLY
- THREADED JOINTS LUBRICATED USING 'KRYTOX' GPL-206 PER WORK ORDER REQUIREMENTS
- GENERAL OPERATING SPECIFICATIONS:
 - MEDIA: LNG (LIQUID NATURAL GAS)
 - MAX. INTERNAL PRESSURE: 300 PSIG (FUELING); 550 PSIG (STATIC SYSTEM)
 - TEMPERATURE RANGE: -350°F TO +150°F
- PACKAGE IN A SEALED POLY BAG IDENTIFIED PER WORK ORDER REQUIREMENTS
- TEST PRESSURE: 600 PSIG, HYDROSTATIC, TO BE TESTED COUPLED TO ITS MATING HALF CANNOT BE APPLIED WHILE BEING COUPLED OR UN-COUPLED.

QTY	DESCRIPTION	MATERIAL / FINISH SPECIFICATION	ITEM
1	BULKHEAD NUT	BRASS	7
1	CAP ASSEMBLY	CRES, ALUM, PLASTIC	6
1	END FITTING	303 CRES	5
1	NUT	BRASS	4
1	SEAL	TFE	3
1	HOUSING ASSY	CRES	2
1	POPPET ASSY	CRES / KEL-F	1

QUANTITY REQ'D	BSC	FSCM NO.	PART NUMBER	PART DESCRIPTION	MATERIAL / FINISH SPECIFICATION	ITEM
-2	-1					

DRILLED HOLE TOL.		* UNLESS OTHERWISE SPECIFIED *	
.013 TO .125	= +.004 - .001	ALL DIMENSIONS ARE IN INCHES AND ARE TO BE MET BEFORE PLATING	
.125 TO .250	= +.005 - .001	TOLERANCES ARE:	
.250 TO .500	= +.006 - .001	DECIMALS	ANGULAR
.500 TO .750	= +.008 - .001	.XX = ± .030	.XXX = ± .010
.750 TO 1.00	= +.010 - .001	BREAK SHARP EDGES .005-.010 & REMOVE BURRS	
1.00 TO 1.50	= +.012 - .001	MACHINED FILLETS TO BE .010-.030 RADIUS	
		CONC. = .005 TIR; SQUARENESS = .005 PER INCH	
		GENERAL FINISH TO BE 100 RMS PER ASA B48.1	

MATERIAL / SPEC		HEAT TREAT / SPEC		FINISH / SPEC	
	NONE		NONE		NONE

CONTRACT NO.		CUSTOMER SPEC		CUSTOMER		TITLE	
						Macro Technologies LLC 11815 - 124th Ave N.E. * Kirkland, WA * 98034	
						LNG FILL SYSTEM MALE QDV WITH 3/8 PIPE EXTENSION	
						SIZE B	CAGE CODE 62529
						DRAWING NO. 12895	REV D
						SCALE NONE	AQL LEVEL
						SHEET 1	OF 1